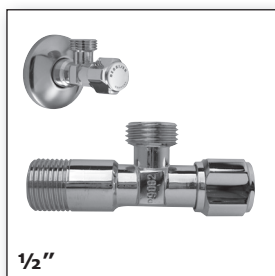


**Torneiras de esquadria**  
**Angle Valves**

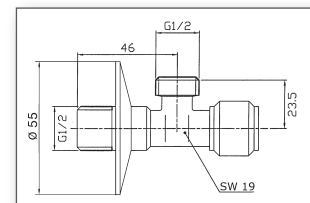


**Art. 730 12 12**

- **Torneira de esquadria 1/2" x 1/2"**  
mecanismo em câmara com massa sem porca, com espelho.  
**Classe acústica I**, Certificado: **P-IX 794/IA**

**Angle Valve 1/2" x 1/2"**

without C.P. Brass Compression Nut, Mechanism with Grease Chamber, with sliding Rosette, Single Box packing, **Noise Class I** (lowest noise), Approval-No.: **P-IX 794/IA**



**Art. 730 12 15**

- **Torneira de esquadria 1/2" x 1/2" junta em Teflon**  
sem porca Bicorne, mecanismo em câmara com massa, com espelho. **Classe acústica I**, Certificado: **P-IX 794/IA**

**Angle Valve 1/2" x 1/2" self-sealing / Teflon**

without C.P. Brass Compression Nut, Mechanism with Grease Chamber, with sliding Rosette, Single Box packing, Noise Class I (lowest noise), Approval-No.: P-IX 794/IA

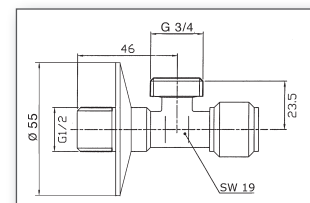


**Art. 730 12 34**

- **Torneira de esquadria 1/2" x 3/4"**  
mecanismo em câmara com massa, sem porca, com espelho  
**Classe acústica I**.

**Angle Valve 1/2" x 3/4"**

without C.P. Brass Compression Nut, Mechanism with Grease Chamber, with sliding Rosette, Single Box packing.



**Art. 799 38 38**

- **Filtro 3/8" x 3/8"**  
Para torneira esquadria com saída 3/8", em aço inoxidável  
**2 Unidades por caixa.**

**Filter 3/8" x 3/8"**

as Universal Upgrade for Angle Valves with Outlet 3/8", C.P. Brass with Strainer made out of Stainless Steel, Box packing as pair (2 pieces)



**Art. 799 12 12**

- **Filtro 1/2" x 1/2"**  
Para torneira esquadria com saída 1/2", em aço inoxidável.  
**2 Unidades por caixa.**

**Filter 1/2" x 1/2"**

as Universal Upgrade for Angle Valves with Outlet 1/2", C.P. Brass with Strainer made out of Stainless Steel, Box packing as pair (2 pieces)

