

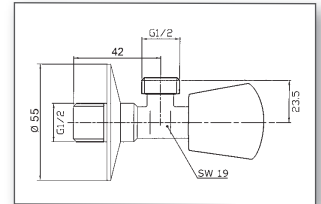
Art. 759 12 12

NOVO

- **Torneira de esquadria 1/2" x 1/2" com espelho**
Manipulo em metal (design trapézio)

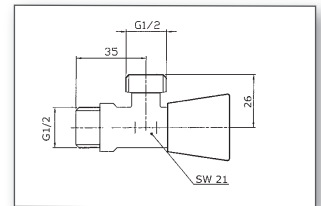
Angle Valve 1/2" x 1/2" incl. Rosette
with Sanitary Headpart and Metal Handle (Trapeze Design)
Single Box packing, Approval-No. : In Preparation

Torneiras de esquadria
Angle Valves



Art. 755 12 12

- **Torneira de esquadria 1/2" x 1/2"**
Manipulo de metal cromado de 3 pontas,
Classe acústica I, Certificado: **P-IX 794/IA**
Angle Valve 1/2" x 1/2"
with Sanitary Headpart and 3-Point Metal Handle,
Single Box packing, **Noise Class I** (lowest noise),
Approval-No.: **P-IX 795/IA**



Art. 755 12 34

- **Torneira de esquadria 1/2" x 3/4"**
Manipulo de metal cromado de 3 pontas
Angle Valve 1/2" x 3/4"
with Sanitary Headpart and 3-Point Metal Handle,
Single Box packing

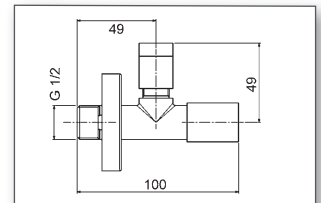
Torneiras de esquadria com Design
Design Angle Valves



Art. 767 38 12

- **Torneira de esquadria ROUND 1/2" x 3/8"**
Inclui espelho e ligação bicorne

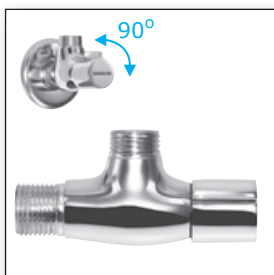
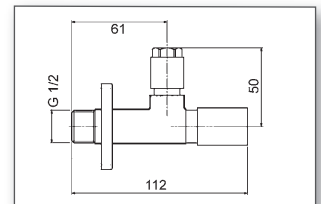
Design Angle Valve ROUND 1/2" x 3/8"
incl. Rosette and Compression Fitting
Single Box packing



Art. 768 38 12

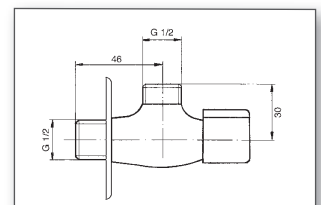
- **Torneira de esquadria SQUARE 1/2" x 3/8"**
Inclui espelho e ligação bicorne

Design Angle Valve SQUARE 1/2" x 3/8"
incl. Rosette and Compression Fitting
Single Box packing



Art. 766 12 12

- **Torneira de esquadria 1/2" x 1/2"**
com punho redondo em metal e cabeça em cerâmica
rotação 90°. Inclui espelho
Angle Valve 1/2" x 1/2"
with Ceramic Headpart (90°) and round Metal Handle,
with Rosette, Single Box packing



Art. 766 38 00

- Acima descrito 1/2" x 3/8" inclui espelho
as above, but 1/2" x 3/8" with Rosette